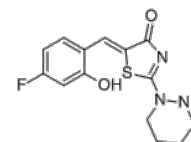


Product Name : CLP257
Cat. No. : PC-60024
CAS No. : 1181081-71-9
Molecular Formula : C₁₄H₁₄FN₃O₂S
Molecular Weight : 307.34
Target : Chloride Channel
Solubility : 100 mM in DMSO



Biological Activity

CLP257 (CLP-257) is a potent, selective K⁺-Cl⁻ cotransporter **KCC2** activator with EC₅₀ of 616 nM.

CLP257 displays selectivity for KCC2 over other KCC family members, NKCC1 and GABAA receptors, and a panel of 55 other receptors.

CLP257 restores impaired Cl⁻ transport in neurons, rescues KCC2 plasma membrane expression.

CLP257 renormalizes stimulus-evoked responses in spinal nociceptive pathways in a rat model of neuropathic pain.

References

Cardarelli RA, et al. *Nat Med.* 2017 Dec 7;23(12):1394-1396.

Gagnon M, et al. *Nat Med.* 2013 Nov;19(11):1524-8.

Ferrini F, et al. *Sci Rep.* 2017 Jun 20;7(1):3870.

Caution: Product has not been fully validated for medical applications. Lab Use Only!

E-mail: tech@probechem.com